

A New Method for Improving Wi-Fi Based Indoor Positioning Accuracy

Yuntian Brian Bai¹, Suqin Wu¹, Guenther Retscher², Allison Kealy³, Lucas Holden¹, Martin Tomko⁴, Aekarin Borriak¹, Bin Hu¹, Mark Sanderson⁵, Hong Ren Wu⁶, Kefei Zhang¹

¹ SPACE Centre, Sch. of Mathematical and Geospatial Sciences, RMIT University

² Dept. of Geodesy and Geoinformation, Vienna University of Technology

³ Dept. of Infrastructure Engineering, University of Melbourne

⁴ Dept. of Computing and Information Systems, University of Melbourne

⁵ Sch. of Computer Science and Information Technology, RMIT University

⁶ Sch. of Electrical and Computer Engineering, RMIT University

Abstract. Wi-Fi and smartphone based positioning technologies are playing a more and more important role in Location Based Service (LBS) industries due to the rapid development of the smartphone market. However, the low positioning accuracy of these technologies is still an issue for indoor positioning. To address this problem, a new method for improving the indoor positioning accuracy was developed. The new method initially used the Nearest Neighbor (NN) algorithm of the fingerprinting method to identify the initial position estimate of the smartphone user. Then two distance correction values in two roughly perpendicular directions were calculated by the path loss model based on the two signal strength indicator (RSSI) values observed. The errors from the path loss model were eliminated through differencing two model-derived distances from the same access point. The new method was tested and the results were compared and assessed against that of the commercial Ekahau RTLS system and the NN algorithm. The preliminary results showed that the positioning accuracy has been improved consistently after the new method was applied and the root mean square accuracy was improved to 3.4 m from 3.8 m of the NN algorithm.

Keywords. Indoor positioning, Wi-Fi, Smartphone, LBS, Fingerprinting

1. Introduction

With the rapid development of smartphone and Wi-Fi technologies, more and more people are dependent on their phones as the sole source of telecommunication and entertainment. These technologies are also a growing means of connecting with each other instead of using email and other traditional social media. Various sensors, such as global positioning system (GPS) receivers, accelerometers, gyroscopes, digital compasses, cameras, Wi-Fi, and Bluetooth, have been embedded in smartphones for not only communications and entertainment, but also location-based services (LBS). Wi-Fi has become a default feature for all smartphones in recent years. As a result, wireless local area network (WLAN) technology experiences significant development due to the rapid increasing demand from the smartphone industry. For example, the WLAN world market grew more than 20% in 2012, topping US \$4 billion in annual revenue (Machowinski, 2013). Wi-Fi market revenues are forecasted to approach US \$12 billion in 2017, a 57% increase over 2012 revenues (Donovan, 2013). Wi-Fi based positioning using smartphones is therefore playing a key role in the commercial market. However, the low positioning accuracy is still an issue for Wi-Fi based positioning due to the signal fluctuation caused by various interferences, how to improve the positioning accuracy of Wi-Fi based systems is the main focus of this research.

2. Typical Indoor Positioning Technologies

A number of typical indoor positioning technologies are overviewed in this section. The advantages and challenges of Wi-Fi and smartphone technologies, and the commonly used measurement and estimation methods are investigated.

1.1 2.1. Why Wi-Fi and Smartphones?

Many positioning technologies or systems can be used for tracking people and asset in an indoor environment. During the past decades, typical indoor positioning technologies such as Wi-Fi, smartphone, Bluetooth, Radio Frequency Identification (RFID), infrared, ultrasonic and inertial navigation system (INS) or inertial measurement unit (IMU) have been investigated by researchers for their potential applications and positioning capabilities. Bluetooth is commonly used for short-range wireless communications and has low power consumption (Zandbergen, 2009). It has become more popular for location tracking after Bluetooth 4.0 was released which has a longer reading range and a shorter connection time. RFID uses radio waves to transmit a tag identity to its reader so that the carrier of the tag can be

tracked wirelessly (Bai et al., 2012). Infrared is often used for short-range communication between infrared embedded devices; however, infrared cannot penetrate walls, which makes it very difficult to be used between rooms. Ultrasonic can be used to detect objects and measure distances, but the condition of line-of-sight (LoS) is required. INS/IMU is a self-contained navigation technique (Woodman, 2007, Retscher et al., 2012) and usually only provides reliable solutions for a short period of time because its measurement errors rapidly enlarge over time and thus it is difficult to separate or mitigate errors from the navigation signals (Hide, 2003).

Compared with these technologies, Wi-Fi has a major advantage of making use of the existing Wi-Fi infrastructure of an enterprise, which leads to cost and time savings. Today, Wi-Fi based real time location system (RTLS) solution is one of the two major market shareholders in the global RTLS market and holds a very promising future (ResearchAndMarkets, 2014).

Smartphones have been used as miniaturised portable computers for years. Various smartphone built-in sensors, which were originally designed for communications and entertainment, have been adopted for LBS. GPS receivers have been well integrated into smartphones and their positioning performance is reliable for outdoor environments. However, it has issues in indoor environments due to the signal attenuation. In this case, Wi-Fi based positioning technology can be an alternative.

Currently, a number of Wi-Fi and smartphone based commercial RTLS systems are available in the market, e.g. Aeroscout, WhereNet, Newbury and Ekahau (Aeroscout, 2013, WhereNet, 2013, Newbury, 2013, Ekahau, 2013). The Ekahau RTLS system can run over existing Wi-Fi infrastructure and uses the fingerprinting algorithm to estimate the location of the people/object tracked. It has been deployed in many commercial fields and is the only system that has a client software package (Bhaumik, 2010). Thus, Ekahau was tested for comparison with the positioning accuracy of our new method in this research.

1.2 2.2. Main Challenges of Wi-Fi based Indoor Positioning

The main challenge of Wi-Fi and smartphone based positioning is the low positioning accuracy due to the fluctuation of the received signal strength indicator (RSSI) values, which is caused by a range of interferences. Apart from the channel related interferences, the main factors affecting the RSSI values are from the surrounding people and objects, e.g. Wi-Fi signals can be absorbed by water and reflected by metals (Villinger, 2012, Harwood, 2009). A human body, consisting of about 70% water, may in some cases partly or fully block the signals; a metal wall affects the signal propagation more than a wooden wall. The surrounding environmental effect is also the

most difficult factor to be modeled due to the complexity of the indoor environment. Another major affecting factor is radio interference from the devices nearby, such as microwave ovens, baby monitors or garage door openers. Different wireless cards also have different effects on signal strength because different vendors use different hardware (e.g. antennae) and different methods to measure the radio frequency (RF) energy. In fact, the RSSI values from a wireless access point (AP) may fluctuate all the time. Phones from different manufacturers, the same type of phones but with different versions, and even two phones that are exactly the same model, could all have different RSSI values at a certain time point at the same detecting location. The fluctuation of the RSSI values could seriously affect the positioning accuracy.

1.3 2.3. Measurements and Estimation Methods

Four types of measurement models are commonly used for indoor positioning, which are time of arrival (ToA), time difference of arrival (TDoA), angle of arrival (AoA) and RSSI-based models. The RSSI-based model has more popularity than the other three. Their main characteristics are compared in *Table 1*.

Method	Time synchronisation	No. of receivers required	LoS	Accuracy
ToA	Mobile object and all receivers	≥ 3 receivers	Yes	High
TDoA	All receivers	≥ 2 receivers	Yes	High
AoA	Not required	Antenna array required	Yes	Medium
RSSI	Not required	≥ 3 receivers	No	Medium

Table 1. Comparison of four measurement models

Cell of origin (CoO), trilateration and fingerprinting are the three most commonly used location estimation methods for indoor positioning. Generally, CoO is not used as much as the other two methods due to its lower accuracy results. Its accuracy depends on the means of implementation.

Trilateration usually requires three or more AP connections and the user's position estimate is derived from multiple distances (i.e. ≥ 3 distances) between the user being tracked and the surrounding APs using the observed RSSI values. The observed RSSI values can be affected by the output power of the transmitter, the sensitivity of the receiver, the antennae gains at both ends of the path, and the path loss of the signal as it travels through the air from the transmitter to the receiver. The distances between the user to the APs can be calculated by the following path loss model (Greg Durgin, 1998, Cisco System, 2008):

$$d = 10^{\frac{TX_{PWR} - RX_{PWR} - LOSS_{TX} - LOSS_{RX} + GAIN_{TX} + GAIN_{RX} - PL_{1METRE} - s}{10n}} \quad (1)$$

where

- d : distance between the transmitter and receiver in meters;
- RX_{PWR} : transmitter output power in dB;
- TX_{PWR} : detected RSSI in dB;
- $LOSS_{TX}$: sum of all transmitter-side cable and connector losses in dB;
- $Gain_{TX}$: transmitter-side antenna gain in dBi;
- $LOSS_{RX}$: sum of all receiver-side cable and connector losses in dB;
- $Gain_{RX}$: receiver-side antenna gain in dBi;
- PL_{1Meter} : reference path loss in dB for the desired frequency when the receiver-to transmitter distance is 1 meter, (Miguel, 2014);
- n : path loss exponent for the environment;
- s : standard deviation associated with the degree of shadow fading present in the environment.

However, significant errors may occur during the above distance calculation due to the complexity of the surrounding environment. Therefore, trilateration is more suitable for a large space indoor environment.

The fingerprinting method generally consists of two phases: off-line training phase and localisation phase. The deterministic and probabilistic techniques are often used for position estimation in fingerprinting method (Beom-Ju et al., 2010). During the off-line training phase, RSSI values are observed at each of a range of known points, which are also called reference points (RP), from each RP's surrounding APs. Then these observed datasets are all stored in a database (DB) called fingerprinting DB. While in the localisation phase, a set of user's RSSI observations from its surrounding APs are observed and compared with the datasets stored in the fingerprinting DB for identification of best matched dataset in the DB. The position of the RP associated with best matched dataset is taken as the location estimate. The comparison of the three methods is displayed in *Table 2*.

Method	Accuracy	Advantage	Disadvantage
CoO	Low to medium	Simple algorithm	Discrete positions; accuracy depends on the size of cells; a large number of devices are required
Trilateration	Medium	Continuous positioning; no training phase required	At least three receivers are required; poor accuracy may occur, caused by environmental effects
Fingerprinting	Medium to high	Continuous positioning; environmental effects are considered in training phase	Poor accuracy in dynamic environments

Table 2. Comparison of three most commonly used position estimation methods

3. New Positioning Method

A new Wi-Fi based indoor positioning method was developed in this research for improving the positioning accuracy of the fingerprinting ap-

proach based on the nature of the spatial correlation of Wi-Fi signal propagation.

1.4 3.1. Idea Development

The inspiration idea for the new positioning method was originally from a test result from the single wireless AP-connection location tracking (SWAPLT) test. The test was originally designed to track a user location at a certain time based on a single AP connection. An area of 1000 m², 11 APs (red spots), and 30 test points (green spots) were selected for the test (see *Figure 1*).



Figure 1. Testing environment for the SWAPLT test

Eleven Voronoi Polygons were created first by the ArcMAP software and were then adjusted based on the floor layout and an on-site correction process. A final unique AP-polygon pair was identified for each AP and all the strongest RSSI values collected within the polygon were considered from its associated AP. These paired relationship data were then stored into a database and used for determining which polygon a user was located in at the location tracking stage. The SWAPLT test showed that stronger signals presented more stability and consistency. Therefore, the new method started from identifying a surrounding AP with the strongest RSSI value as the initial AP (named AP_{init} hereafter), which was used for the later calculations of the new method.

Another characteristic for the new method to be based on is the spatial correlation of the Wi-Fi signal propagation, that is, the proportion of the RSSI values observed and their corresponding distances calculated is trustworthy for two points which are close to each other (e.g. < 1.5 m, depending on the RP resolution). It is indicated that the point with a stronger RSSI value observed from an AP is closer to the AP than another point, and vice versa; the two errors in the distances to the AP obtained from the path loss model can be considered as the same.

Other Wi-Fi signal features were also considered during the development of the new method. For example, a weak Wi-Fi signal may present less stability and reliability, which should be considered during the positioning process. Based on the specification of the AP products, signals with the RSSI values greater than -70 dB were presumed for better consistency and positioning operation. Furthermore, an empirical RSSI threshold of -85 dB was adopted for rejection of ineffective RSSI values in the tests for our new method. The -85 dB was also the RSSI threshold adopted in the Ekahau RTLS system.

1.5 3.2. Development of the New Method

In relation to the above principles, the new method started from the Nearest Neighbour (NN) algorithm of the fingerprinting method. In the training phase, at each RP, 5 effective observations including the RSSI value and MAC address from each of selected surrounding APs were collected at a 1-second sampling rate, then the mean of the observed RSSI values (\bar{S}_{RP}) for each RP was calculated. An example of \bar{S}_{RP} at the k^{th} RP can be expressed as:

$$\bar{S}_{RPk} = (\overline{RSSI}_{RPk}^{AP1}, \overline{RSSI}_{RPk}^{AP2}, \dots, \overline{RSSI}_{RPk}^{APn}) \quad (2)$$

The mean of RSSI observations for each RPs were saved to the fingerprinting DB. It should be noted that an 8-second data collection period of time was used for 5 effective observations in case that some of the RSSI values were out of the RSSI threshold and more data collection time was needed.

During the location detection phase, a RSSI dataset from the smartphone user was observed as $S_{usr} = (RSSI_{usr}^{AP1}, RSSI_{usr}^{AP2}, \dots, RSSI_{usr}^{APn})$, then S_{usr} was compared with the \bar{S}_{RP} values stored in the DB using the following equation:

$$\delta_k = \sqrt{\sum_{i=1}^n (RSSI_{usr}^{APi} - \overline{RSSI}_{RPk}^{APi})^2} \quad (3)$$

where n is the number of selected surrounding APs at RP_k ; δ_k is the difference between S_{usr} and \bar{S}_{RPk} . The location of RP with the minimum δ value, which is also called the best matched RP, was taken as the user's initial estimate (P_{init}) (e.g. RP_3 in *Figure 2*). The AP which had the strongest RSSI value observed at P_{init} was identified as AP_{init} (e.g. AP_5 in *Figure 2*). Let AP_p (e.g. AP_4 in *Figure 2*) be the roughly perpendicular AP that satisfies the following conditions: 1) the distance between P_{init} and $AP_p < 40$ m; 2) $60^\circ \leq \angle AP_{init}-P_{init}-AP_p \leq 120^\circ$ or $240^\circ \leq \angle AP_{init}-P_{init}-AP_p \leq 300^\circ$; and 3) the RSSI value received at P_{init} from $AP_p \geq -70$ dB. If more than one such AP candidates are available, the AP that has the strongest RSSI value is selected. After the AP_p is determined, a virtual perpendicular AP (AP_{per}) is defined by the following geometry configuration process: 1) $\angle AP_{init}-P_{init}-AP_{per}=90^\circ$ or

$\angle AP_{init}-P_{init}-AP_{per}=270^\circ$; 2) $|\angle AP_p-P_{init}-AP_{per}|\leq 30^\circ$; and 3) the distance of P_{init} -to- $AP_{per}=P_{init}$ -to- AP_p .

The next step was calculating the difference (Δd_1) between the distance (\bar{d}_1) of P_{init} -to- AP_{init} and the distance (d_1) of P -to- AP_{init} , and also the difference (Δd_2) between the distance (\bar{d}_2) of P_{init} -to- AP_{per} and the distance (d_2) of P -to- AP_{per} using *Equations 1*, and *4* or *5*.

$$\Delta d_1 = d_1 - \bar{d}_1 \quad (4)$$

$$\Delta d_2 = d_2 - \bar{d}_2 \quad (5)$$

where $P(x, y)$ is the user's position. Δd_1 and Δd_2 are called distance correction value (DCV) in the two typical directions defined as aforementioned and also shown in *Figure 2*. It is noted that if there is no effective AP_p found, then only one correction value (i.e. Δd_1) will be applied.

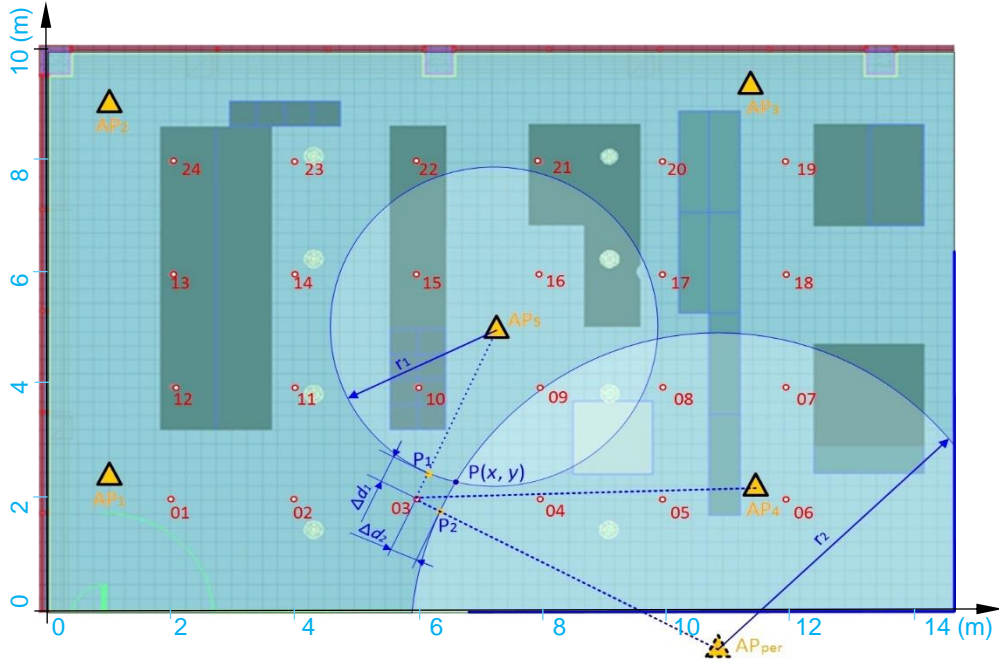


Figure 2. Diagram for the correction in the new method

In the last step, the two corresponding known (true) distances of P_{init} -to- AP_{init} (D_1) and P_{init} -to- AP_{per} (D_2) were corrected by adding the DCV values to obtain the radial parameters r_1 and r_2 using *Equations 6* and *7* respectively (and also see *Figure 2*, r_1 is the distance of P_1 -to- AP_{init} and r_2 is the distance of P_2 -to- AP_{per}). Then the two circles with the radii of r_1 and r_2 expressed by

Equations 8 and 9 were used to solve for $P(x, y)$ and the intersection point closer to P_{init} was regarded as the final estimate of $P(x, y)$.

$$r_1 = D_1 + \Delta d_1 \quad (6)$$

$$r_2 = D_2 + \Delta d_2 \quad (7)$$

$$r_1 = \sqrt{(x - x_{init})^2 + (y - y_{init})^2} \quad (8)$$

$$r_2 = \sqrt{(x - x_{per})^2 + (y - y_{per})^2} \quad (9)$$

where (x_{init}, y_{init}) and (x_{per}, y_{per}) are the coordinates of AP_{init} and AP_{per} respectively.

The final result estimation for the method is in fact an error correction process to the P_{init} . The core part of the method is to take fully into account the difference of the RSSI values and use the observation derived values for the calculation of \bar{d}_1 and \bar{d}_2 , although the true distances D_1 and D_2 are known. In this case, the distance errors from the path loss model are eliminated for these two points which are close to each other (e.g. P_{init} and P in *Figure 2*), and therefore the DCV can be considered as the true difference based on the difference of the RSSI values observed. The flowchart diagram in *Figure 3* describes the overall procedure of the new method.

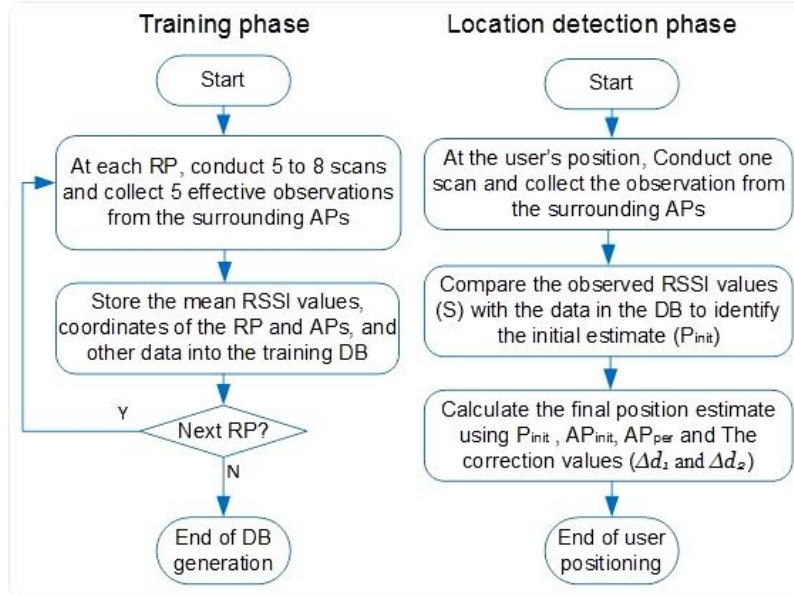


Figure 3. Overall procedure of the new method

4. Testing and Result Evaluation

1.6 4.1. Test Environmental Setup

A testing environment was established in the RMIT Indoor Positioning Lab for us to conduct the tests of Ekahau RTLS System, NN algorithm and our new method, as shown in *Figure 2*. The testing environment was made up like a real world public area such as a shopping mall. Five Linksys WAP54G wireless APs were installed in the area to form a fully controlled WLAN environment. A HP Elite Book 2560P was used as the server machine and a HTC One smartphone as the client-side device. A total of 24 RPs were marked covering most of the testing area at a $2\text{m} \times 2\text{m}$ grid resolution. These RPs were also used as test points (TP) later on during the location detection phase of the new method.

1.7 4.2. Test of Ekahau RTLS

The Ekahau RTLS Controller (ERC) was installed on the HP laptop as a remote server, and the Ekahau Site Survey (ESS) was installed for defining the wireless network plan, conducting a site survey and establishing a fingerprinting DB (see *Figure 4a*). The Ekahau Positioning Client (EPC) virtual software was installed on the smartphone as a virtual tag, *Figure 4b* shows the EPC's operation and configuration interface.

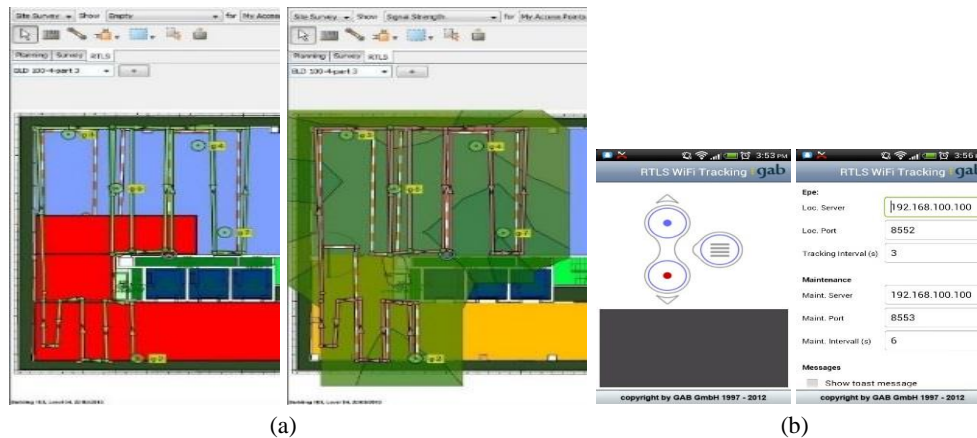


Figure 4. (a) The walking path for training data collection in the test area; (b) The operation (left) and configuration (right) interface of the EPC

During the user position detection phase, the smartphone was placed at each of the 24 TPs, their real time position estimates were displayed on the Ekahau Vision Client Monitor interface. With the assistance of the Ekahau Software Developer's Kit, a java-based application program was developed

to record the location estimates from all the TPs. The RMS positioning accuracy obtained from the Ekahau RTLS is 3.9 m.

1.8 4.3. Test of the New Method

The same testing environment as for Ekahau was used for this test. The test included two main stages:

1. Fingerprinting DB generation and initial position estimation

At each RP, the observations values from the surrounding 5 APs were collected. Probing behavior of the test client should be as close as possible to that of the clients to be tracked. The mean of the 5 effective RSSI observations for each RP were saved to the fingerprinting DB.

During the user detection phase, a smartphone was placed at a TP (the true position of which was known), and the RSSI values from all the 5 APs were received as S (-47, -52, -67, -40, -39). Then S was compared with those \bar{S}_{RP} stored in the DB using Equation 2, and RP₃, AP₅ and AP₄ were determined as P_{init}, AP_{init} and AP_p respectively (see Table 3 for an example). Finally AP_{per} was defined accordingly.

RPs in DB	AP1	AP2	AP3	AP4	AP5	$\bar{\delta}$ (dB)
02	-41	-53	-73	-44	-43	10.2
03	-45	-53	-69	-42	-41	4.1
04	-48	-55	-68	-43	-40	4.6
08	-55	-57	-55	-40	-42	15.6
17	-67	-58	-43	-49	-43	33.3
22	-65	-47	-47	-54	-45	31.3
⋮	⋮	⋮	⋮	⋮	⋮	
Detected at P	-47	-52	-67	-40	-39	
The minimum $\bar{\delta}$ is 4.1 dB, RP3 therefore was selected as the initial position P _{init}						RP3

Table 3. Part of the data used for comparison and P_{init} determination

2. Corrections to the initial estimate

Table 4 showed the calculation and result including intermediate values for the correction to P_{init}.

True distance D (m)	Estimated distance \bar{d} (m)	Estimated distance d (m)	$\Delta d = d - \bar{d}$ (m)	$r = D + \Delta d$	Final P(x, y)
$D_1 = 3.15$	$\bar{d}_1 = 1.50$	$d_1 = 1.25$	$\Delta d_1 = -0.25$	$r_1 = 2.90$	nearer intersection point of the circles (r_1 & r_2)
$D_2 = 5.68$	$\bar{d}_2 = 1.64$	$d_2 = 1.37$	$\Delta d_2 = -0.28$	$r_2 = 5.40$	

Table 4. Positioning determination result

The statistical RMS accuracy (δ_{RMS}) of all the TPs was 3.4 metres, which was calculated by:

$$\delta_{RMS} = \sqrt{\frac{1}{m} \{ \sum_{k=1}^m [(x_k - x_{ek})^2 + (y_k - y_{ek})^2] \}} \quad (10)$$

where m is the total number of TPs tested, (x_k, y_k) and (x_{ek}, y_{ek}) are the true and estimated coordinates at TP $_k$ respectively.

1.9 4.4. Results Evaluation

The commercial Ekahau RTLS, the NN algorithm and the new method were tested in the same testing environment. *Figure 5* shows the comparison of their test results in terms of positioning accuracy of the same 24 TPs.

The RMS accuracy of the 24 TPs for the three scenarios are 3.9 m, 3.8 m and 3.4 m respectively, i.e., after the new method was employed, the positioning accuracy was improved to 3.4 m from 3.8 m of the NN algorithm.

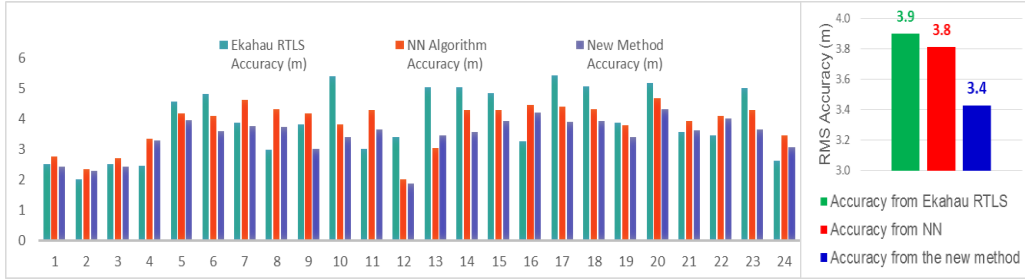


Figure 5. Comparison of accuracy results from Ekahau RTLS, NN algorithm and the new method

The accuracy of 3.9 m of the Ekahau RTLS result is within the range of 3–5 m as claimed in its product manual. The accuracy of 3.8 m of NN is slightly better, however, it cannot be drawn by this minor difference that NN is better than Ekahau RTLS in general. However, the new positioning method has shown a noticeable and consistent improvement compared with the other two approaches.

5. Conclusion and Future Work

This paper presents a new indoor positioning method based on Wi-Fi and smartphone technologies and the fingerprinting estimation method. The test results have shown that the new method effectively and consistently improved positioning accuracy at a level of nearly half a metre. Moreover, the new method also have advantages such as flexibility and expendability for further development, as well as ease to be integrated with other positioning systems.

Future work will include performance assessment for various grid resolutions of RPs, and investigation of the variation of RSSI observations from a particular AP at different time.

6. Acknowledgements

This work was supported in part by the Australian Research Council (LP120200413)

References

- AEROSCOOUT. 2013. *AeroScout's enterprise visibility solutions* [Online]. Available: www.aeroscout.com 20th Jan 2013].
- BAI, Y. B., WU, S., WU, H. & ZHANG, K. 2012. Overview of RFID-Based Indoor Positioning Technology. *Geospatial Science, RMIT 2012*. Melbourne: RMIT University.
- BEOM-JU, S., KWANG-WON, L., SUN-HO, C., JOO-YEON, K., WOO JIN, L. & HYUNG SEOK, K. 2010. Indoor WiFi positioning system for Android-based smartphone. *Information and Communication Technology Convergence (ICTC), 2010 International Conference on*.
- BHAUMIK, R. 2010. Evaluating Wi-Fi Location Estimation Technique for Indoor Navigation.
- CISCO SYSTEM, I. 2008. Wi-Fi Location-Based Services 4.1 Design Guide.
- DONOVAN, F. 2013. *Wi-Fi market revenues to reach \$12 billion in 2017* [Online]. FierceMobileIT. Available: <http://www.fiercemobileit.com/story/wi-fi-market-revenues-reach-12-billion-2017-says-delloro/2013-07-26> [Accessed 1 April 2014].
- EKAHAU. 2013. Available: <http://www.ekahau.com/> [Accessed 20th Jan 2013].
- GREG DURGIN, T. S. R., HAO XU 1998. Measurements and Models for Radio Path Loss and Penetration Loss In and Around Homes and Trees at 5.85 GHz. *IEEE TRANSACTIONS ON COMMUNICATIONS*, 46, 1484-1496.
- HARWOOD, M. 2009. Factors Affecting Wireless Signals. In: KANOUSE, P. (ed.) *CompTIA® Network+ Exam Cram*. 3rd Edition ed.: Paul Boger.
- HIDE, C. 2003. *Integration of GPS and Low Cost INS measurements*. the degree of Doctor of Philosophy, University of Nottingham.
- MACHOWINSKI, M. 2013. *New high of \$4 billion for wireless LAN market in 2012* [Online]. Infonetics Research. Available: <http://www.infonetics.com/pr/2013/4Q12-Wireless-LAN-Market-Highlights.asp> [Accessed 20 April 2013].
- MIGUEL. 2014. *Path Loss in free space* [Online]. Available: <http://www.qsl.net/pa2ohh/jsffield.htm> [Accessed 9 May 2014].
- NEWBURY. 2013. *Newbury's enterprise-class location solutions* [Online]. Available: WLANs at www.newburynetworks.com [Accessed 20th Jan 2013].
- RESEARCHANDMARKETS. 2014. *Real-Time Location Systems (RTLS) Market by Product, Technology, Application, Industry Vertical & Geography 2013 - 2020* [Online]. Research and Markets. Available: http://www.researchandmarkets.com/publication/mbga76c/realtime_location_systems_rtls_market_by_p [Accessed 23 April 2014].
- RETSCHER, G., ZHANG, K. & ZHU, M. 2012. RFID Positioning. In: CHEN, R. (ed.) *Ubiquitous Positioning and Mobile Location-Based Services in Smart Phones*. 1st. ed. the United States of America: Information Science Reference.

- VILLINGER, S. 2012. *10 reasons your Wi-Fi speed stinks (and what you can do about it)* [Online]. Available: <http://www.itworld.com/networking/276200/10-reasons-your-wi-fi-speed-stinks-and-what-you-can-do-about-it> [Accessed 30 May 2014].
- WHERE.NET. 2013. *Tracks What the Army Assembles* [Online]. Available: www.sydneywireless.com [Accessed 20th Jan 2013].
- WOODMAN, O. J. 2007. An introduction to inertial navigation. University of Cambridge.
- ZANDBERGEN, P. A. 2009. Accuracy of iPhone Locations: A Comparison of Assisted GPS, WiFi and Cellular Positioning. *Transactions in GIS*, 5-26.